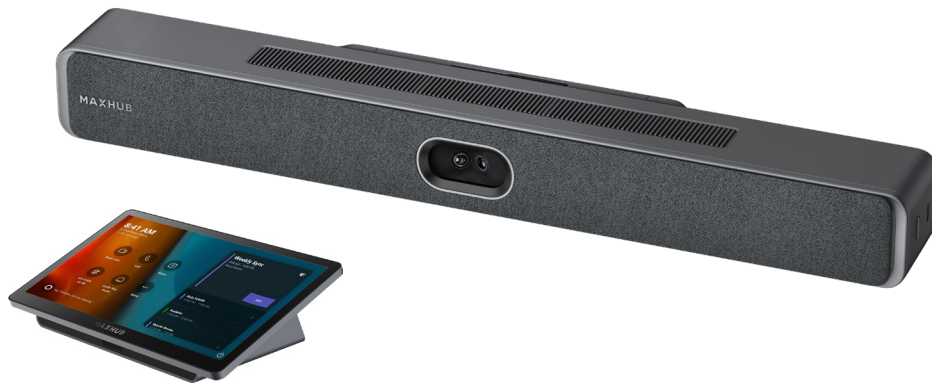


# MAXHUB XBar V50 Kit Datasheet

The MAXHUB XBar V50 is an all-in-one Android-based videobar designed for premium small to medium meeting rooms. Equipped with a 100MP dual-camera system and studio-grade dual speakers, it delivers exceptional audiovisual performance. Enhanced by AI noise reduction, the built-in 12-microphone array ensures crystal-clear audio experience. It can eliminate background interference like keyboard clicks or air conditioning.

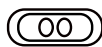
Featuring a dedicated AI chipset, the XBar V50 supports advanced functionalities including Auto Framing, Speaker Tracking, Intelligent Focus and Smart Gathering. Its plug-and-play deployment simplifies installation and remote maintenance, while design for Microsoft Device Ecosystem Platform (MDEP) ensures seamless integration.

 Built on  
Microsoft Device Ecosystem Platform



## 100MP Camera System

Ultra-high-resolution camera system redefines image clarity and spatial adaptability



## Dual-Lens Camera

Ultra-wide 125° HFOV  
Provides a wide range of view in the room



## AI-Powered Technology

Auto Framing  
Speaker Tracking  
Smart Gathering  
Intelligent Focus



## AI Noise Reduction

Built-in 12 MEMS microphone array with AI noise reduction



## Studio-Grade Dual Speakers

Dual 15W  
Stereo Sound  
Full Frequency



## Cloud Device Management

Remotely monitor device status through cloud-based service (MAXHUB Pivot) via an internet connection

Package Contents

XBar V50 (With Standard Accessories)	* 1
Panel AP30 (With Accessories)	* 1

Physical Specification	
Package Dimension (L×W×H)	770 × 257 × 275 mm / 30.3 × 10.1 × 10.8 in
Gross Weight	9.98 kg / 22.0 lb
Content Sharing	
Teams (In Meeting)	1080p@30
Local Sharing (Type-C)	4K@30
Local Sharing (HDMI)	4K@30

Device Management	
Control and Management	Microsoft Device Management Platform (Microsoft Teams Admin Center/Intune/ Pro management portal) MAXHUB Pivot
Environmental Condition	
Operating Temperature	0°C ~ 40°C / 0°F ~ 104°F
Storage Temperature	-20°C ~ 60°C / -4°F ~ 140°F
Operating Humidity	10% ~ 90% RH
Storage Humidity	10%~ 90% RH
Altitude	Below 5000 m

XBar V50:

Camera	
Camera Quantity	2
Pixel	50MP × 2
Sensor	1/1.55 inch
Aperture	F/2.4
Resolution & Frame Rate:	
H.264 / MJPEG	3840 × 2160, 2560 × 1440, 1920 × 1080, 1280 × 720, 1024 × 576, 960 × 540, 800 × 600, 640 × 360.
YUY2	1920 × 1080, 1280 × 720, 640 × 360
ZOOM	6x Digital Zoom
Field of View	130° (D), 125° (H), 50° (V)
Privacy Shutter	Electric and automatical lens shutter
AI Feature	Auto Framing Speaker Tracking Intelligent Focus Smart Gathering Video Fence

Operating System	
MDEP	Supported
OS	Andriod 13

Network	
Wi-Fi	Wi-Fi 6, 2×2 MIMO
Wi-Fi Protocol	802.11 a/ b/ g/ n/ ac/ ax
Working Band	2.4 GHz + 5 GHz
Bluetooth	5.2 + BLE
Network	1000 Mbps

Power	
Power Adapter	AC 100-240 V Input and DC 19V/4.5A Output

Physical Specification	
Product Dimension (L×W×H)	650.8 × 76.6 × 95.7 mm / 25.6 × 3.01 × 3.77 in
Package Dimension (L×W×H)	750 × 136 × 246 mm / 29.5 × 5.4 × 9.7 in
Net Weight	2.8 kg / 6.17 lb
Gross Weight	5.55 kg / 12.24 lb

Audio	
Speaker:	
Speaker Quantity	2
Sound Channel	2.0
Total Power (Max.)	15W + 15W
Sound Pressure (Max.)	83 dB SPL@1W/1M
Frequency Range	80 Hz ~ 20 KHz
Microphone:	
Microphone Quantity	12-mic array
Pickup Range	8 m
Frequency Range	18 Hz ~ 16 KHz
Sensitivity	-36 ± 1 dBFS
Sampling	48 KHz
Expansion	Supports 2 expansion microphones
AI Feature	Noise Reduction Echo Cancellation Anti-Reverberation AGC Algorithm Full-duplex

Input/Output Port	
USB 3.0 Type-B × 1	To connect to your PC
USB 2.0 Type-A × 1	For debug and update
HDMI Out × 2	Up to 4K@60Hz, CEC supported
HDMI In × 1	Up to 4K@60Hz
Audio In × 1	For third-party audio input
Audio Out × 1	For third-party audio output
RJ45 (Internet)	For internet connection
RJ45 (M Link)	To connect expansion device

Standard Accessories	
Power Adapter	× 1
AC Cable (1.5 m / 4.9 ft)	× 1
HDMI Cable (3 m / 9.8 ft)	× 2
Ethernet Cable (3 m / 9.8 ft)	× 1
Mounted Components (ADA Standard)	× 1

Panel AP30:

Display	
Size	11.6 inch
Resolution	1920 × 1080
Frequency Refresh Rate	60 Hz
Backlight Unit	ELED
Brightness With Glass	250 nits (Min.) 300 nits (Max.)
Life Time	≥ 20000 hours

Input/Output Port	
RJ45 (INTERNET)	× 1
RJ45 (EXT)	× 1
DC In	× 1
Type-C (INGEST)	× 1
USB 2.0 (Pairing Wireless Dongle)	× 1

Power	
Power Input	19V DC 4.5A
Power Output	Type-C PD 65W (Max.)

Operating System	
MDEP	Supported
OS	Andriod 13

Touch System	
Type	Capacitive touch
Surface Treatment	Anti-fingerprint, Anti-glare

Accessories	
Type-C Cable (1.5 m / 4.92 ft)	× 1
Ethernet Cable (7.5 m / 24.61 ft)	× 1
Screwdriver	× 1
Power Adapter	× 1
AC Cable (1.5 m / 4.9 ft)	× 1

Sensor	
Motion Sensor	PIR sensor for automatic wake-up

Physical Specification	
Product Dimension (L×W×H)	278 × 164 × 82 mm / 11 × 6.4 × 3.2 inch
Product Weight	116 kg / 2.56 lb
Package Dimension (L×W×H)	1 pcs: 570 × 246 × 101 mm 4 pcs: 590 × 440 × 280 mm
Package Weight	1 pcs: 3.12 kg

Statement

Size and weight vary by configuration and manufacturing process, please refer to the actual product. The product images are for illustrative purposes only and may slightly differ in appearance, colour, size, etc. from the actual product. The description, illustrations, etc. in this document may subject to change in accordance with the latest product specification and performance. Should the above-mentioned change in the document become necessary, the document may be updated without written notice.